

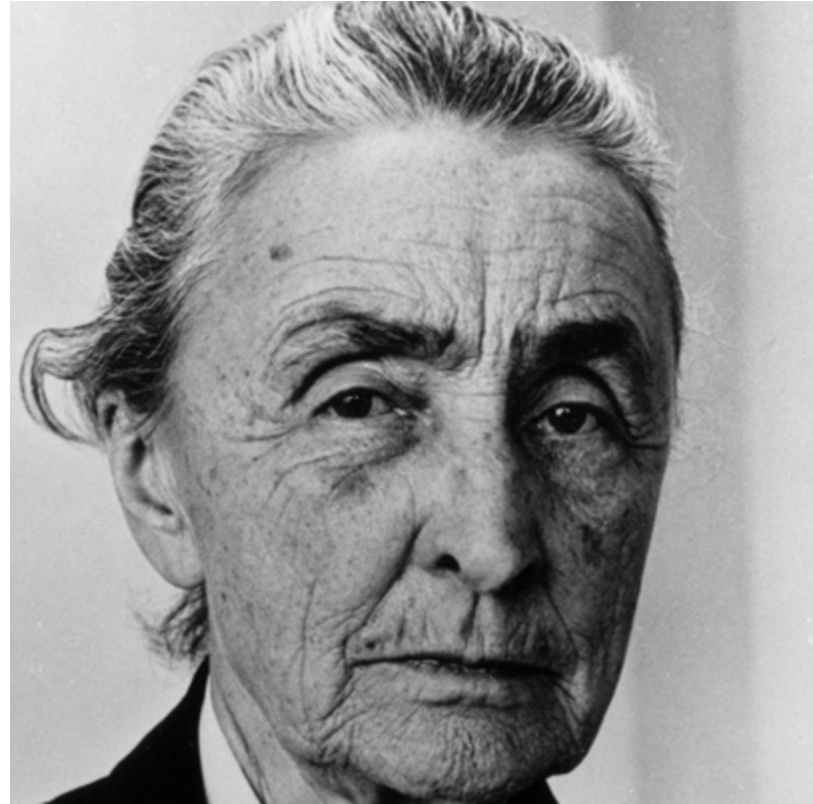


Georgia O'Keeffe

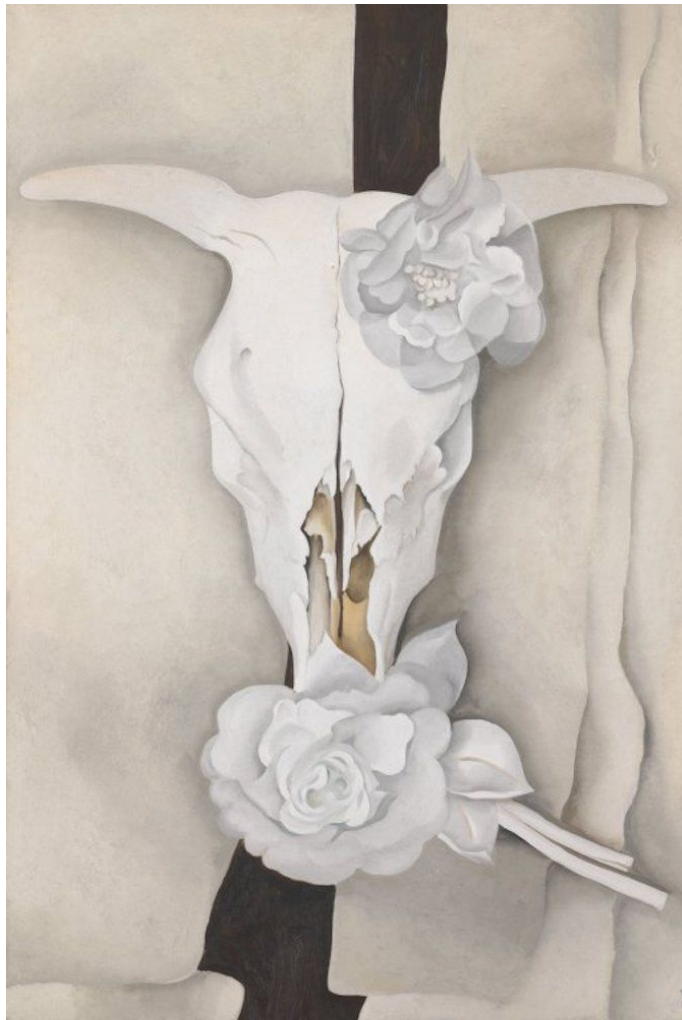
A lesson in Oil Pastel, ancient Mexican culture, and Georgia O'Keeffe.

Georgia O'Keeffe

Born: 1887 Died: 1986



I've been absolutely terrified every moment of my life - and I've never let it keep me from doing a single thing I wanted to do.

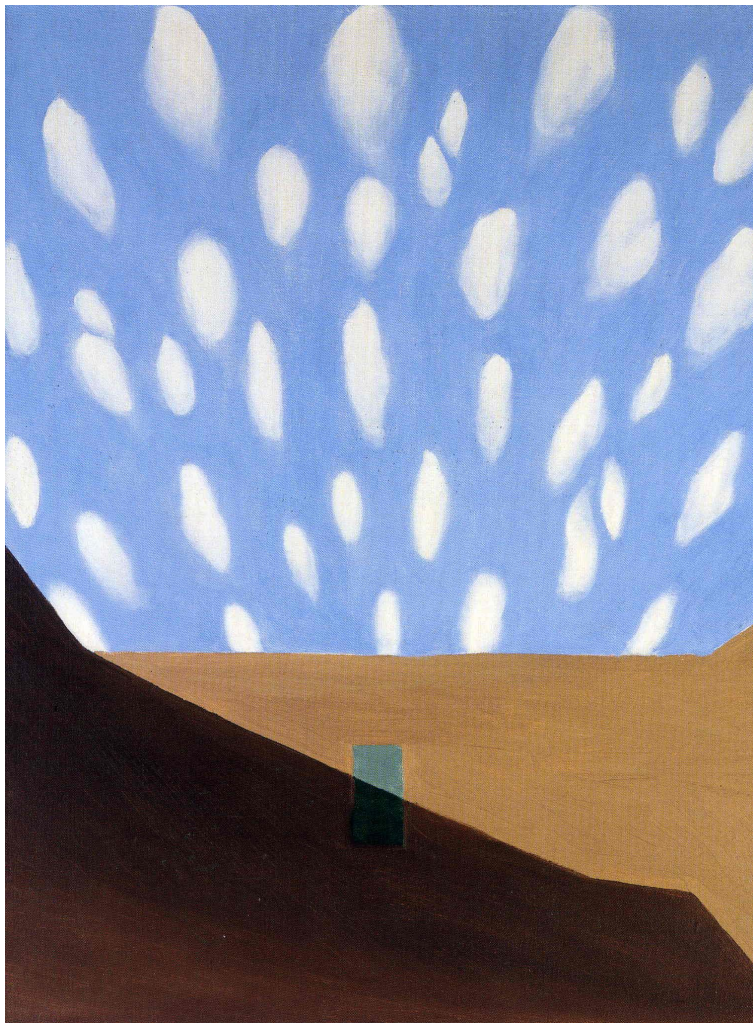


Cow's Skull with Calico Roses



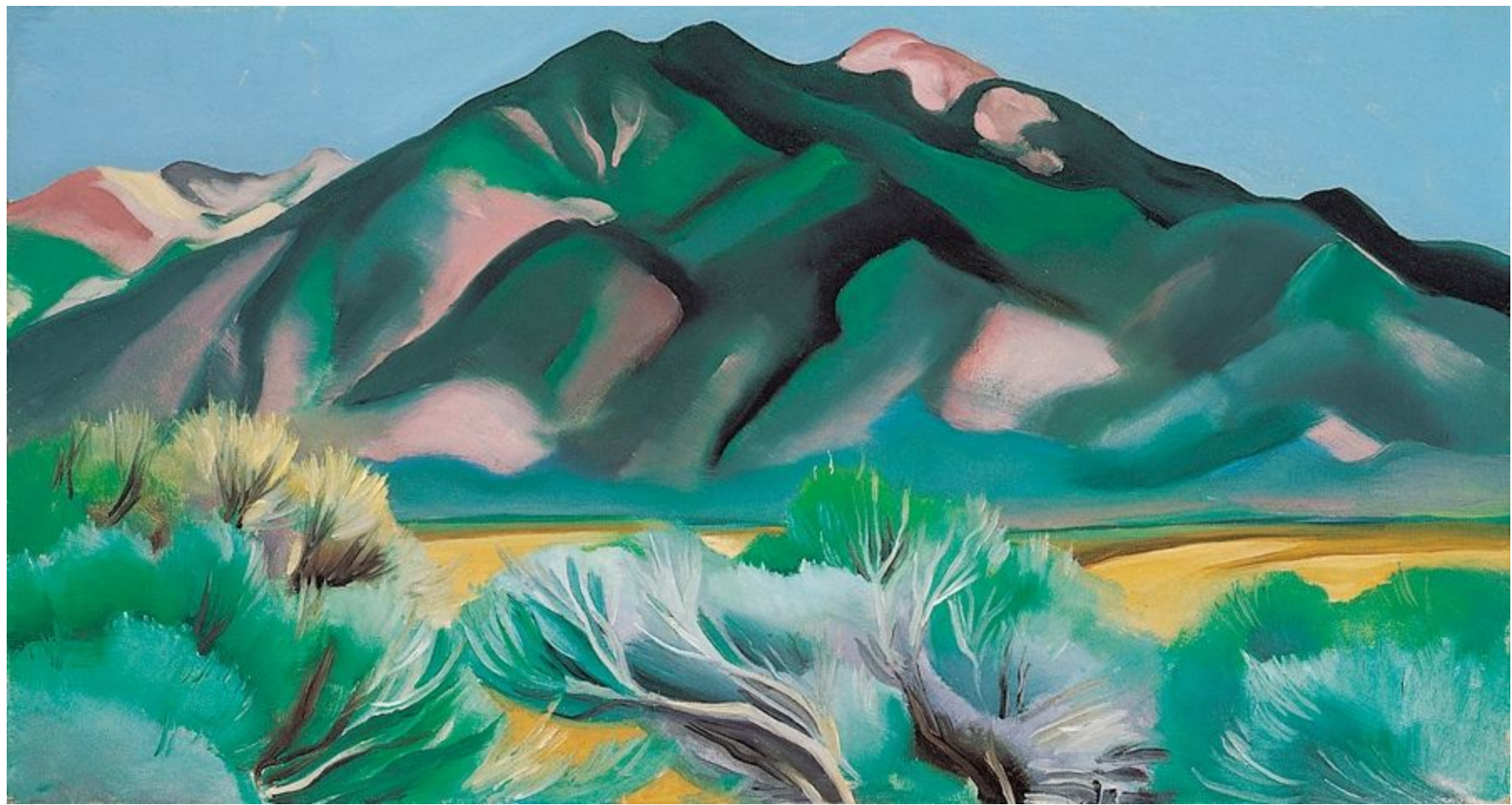
Ram's Head, White
Hollyhock-Hills

*I found I could say things with
color and shapes that I couldn't say
any other way - things I had no
words for.*

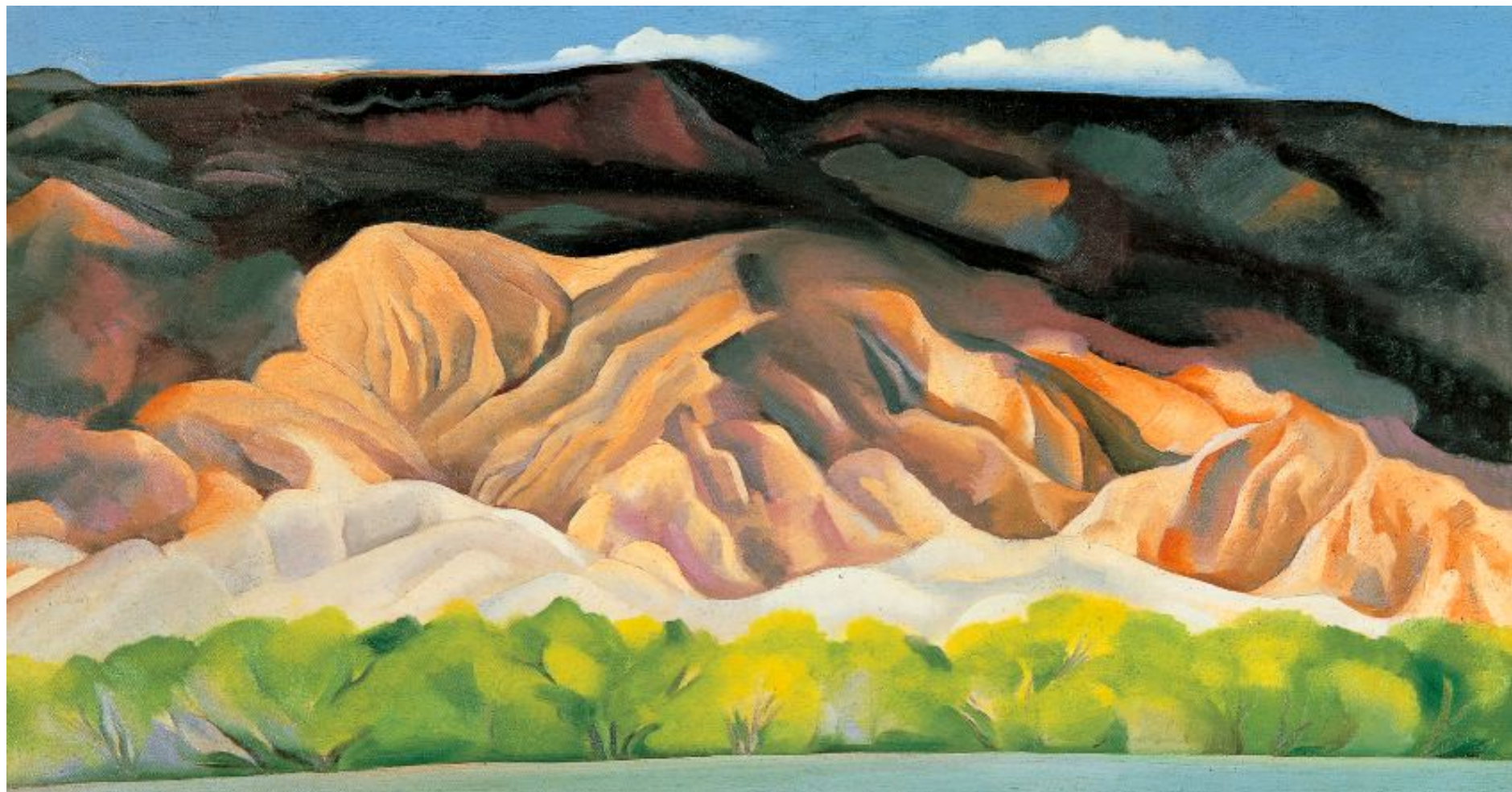


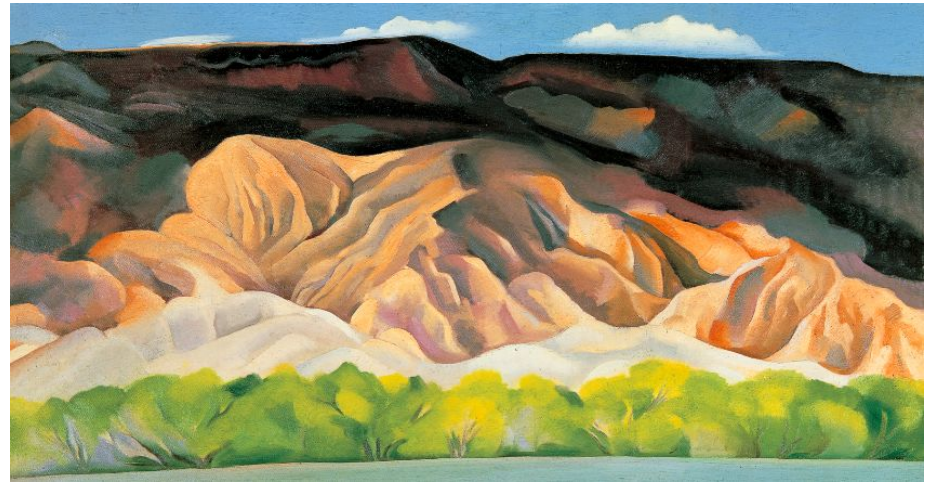
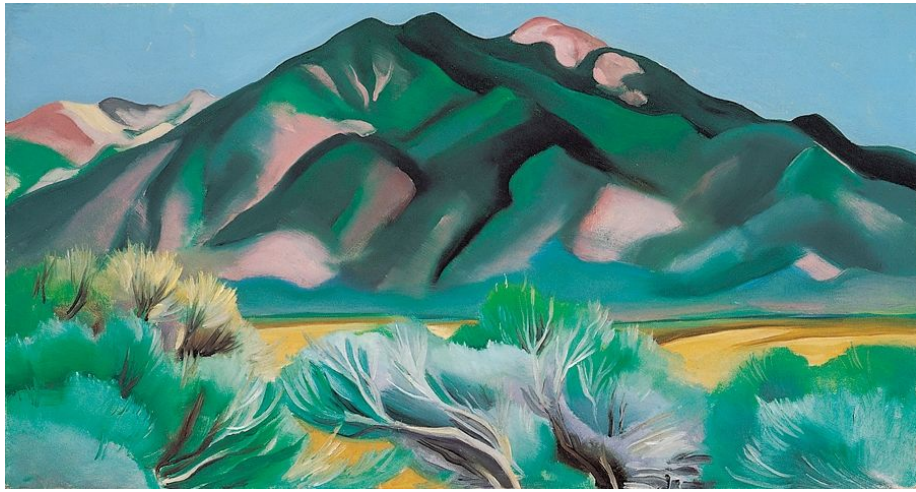
In the Patio VIII, 1950







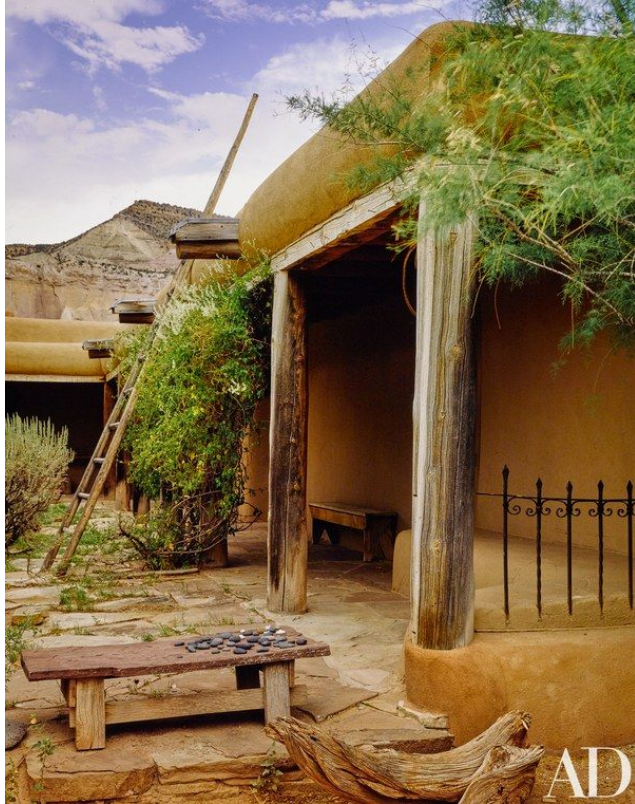




Do you see Organic shapes or Geometric shapes?

What do O'Keeffe's landscapes have in common?

Ghost Ranch, 60 miles north of Santa Fe, New Mexico







AD

What is Adobe?

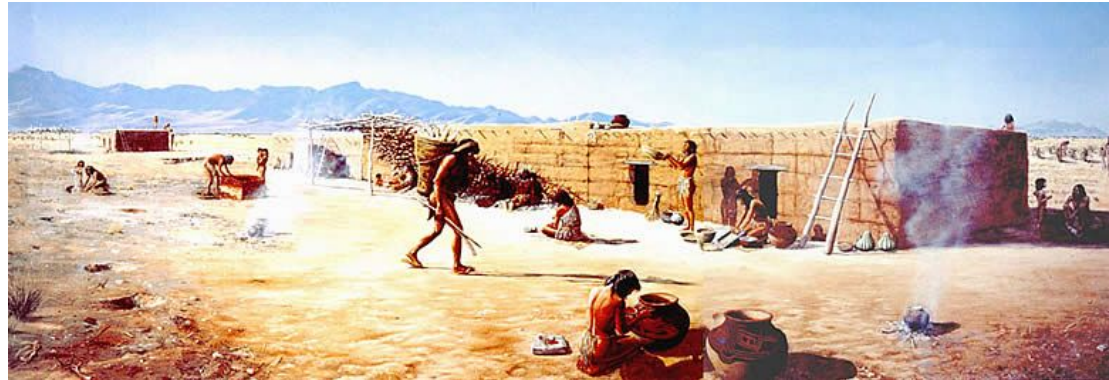
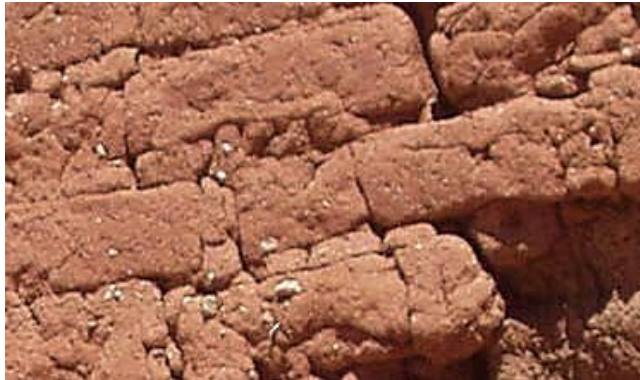
Adobe is mud and straw mixed together and dried to make a strong brick-like material. Pueblo peoples stacked these bricks to make the walls of the house. Gaps between the bricks were filled with more mud to block the wind, rain, and to keep out bugs and other unwanted pests.

Bricks: Natives of the southwest made bricks out of dirt and straw and dried them in the sun to build their pueblos. Over time, rain and wind would cause the bricks to "melt" away.

Wooden posts inside each room supported the roof which was covered with layers of sticks, then grass, mud, and finally plaster. Pueblo peoples plastered their walls and floors and often painted them with red, yellow, white, and black bands.

Some pueblos were very large with more than 100 rooms! The rooms were built in long rows and could house many families. Most pueblos had large underground rooms called kivas that were used for ceremonies and meetings.

Structures made of adobe would not stand up to long periods of rain—over time they would dissolve! Adobe homes were only built in the very dry parts of West Texas, New Mexico, Arizona, Utah, Colorado, and Mexico.





DeVargas House Oldest House in
USA. Santa Fe, New Mexico

Built in 1200 CE

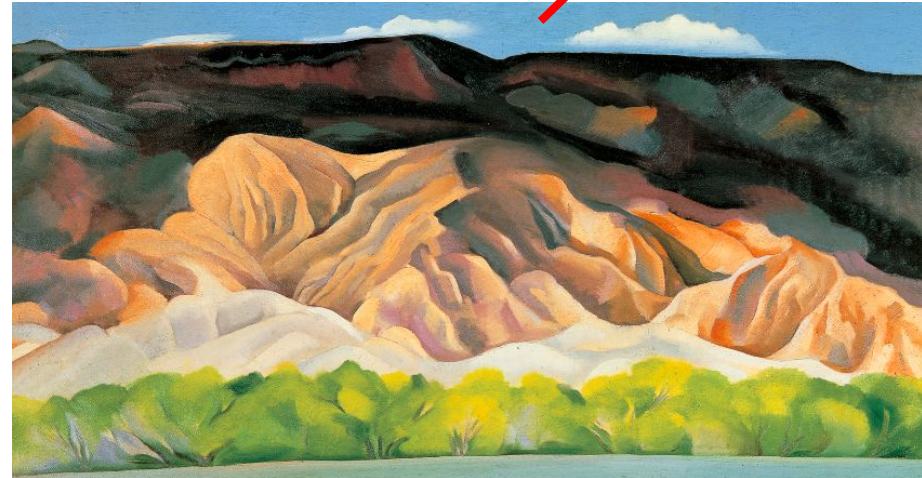
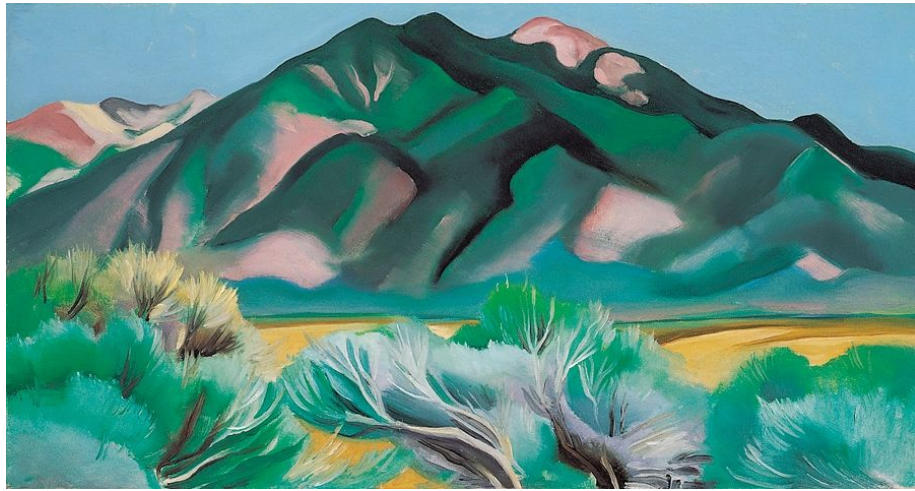
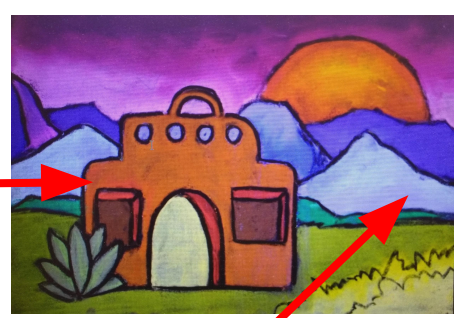




What do you notice about the **shapes** of adobe houses?

We are going to create a landscape with an adobe house, inspired by Georgia O'Keeffe's artistic style.





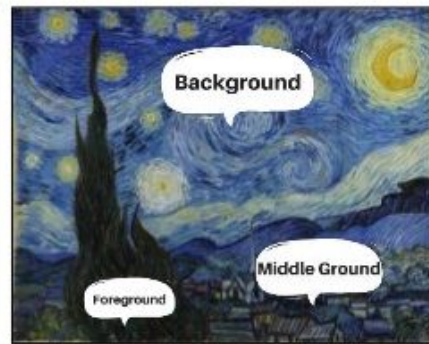
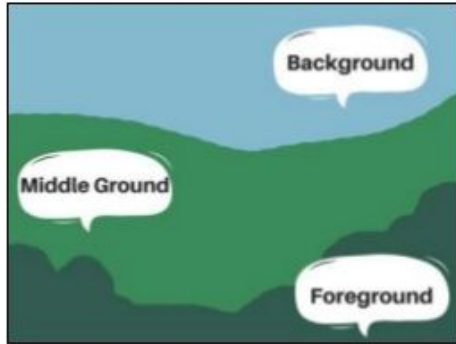
We are going to use organic shapes for the background

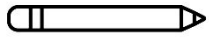


And geometric shapes for the foreground



Defining & Identifying Foreground, Middle Ground, & Background

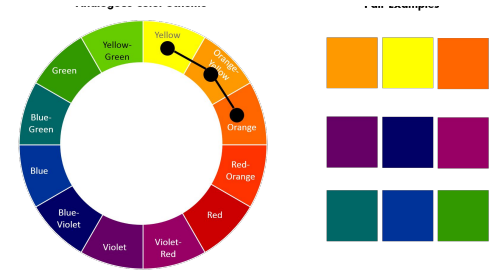




Start with a pencil outline, then color in the background (sky, ground, mountains)



Color in your sun, then adobe house. Use white to help blend. Finish by outlining everything with black oil pastel.





STUDENT EXAMPLES



O'Keeffe Landscape

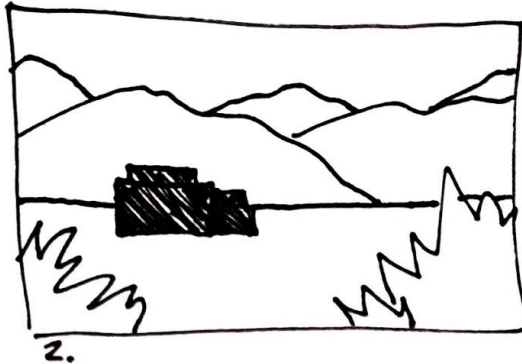
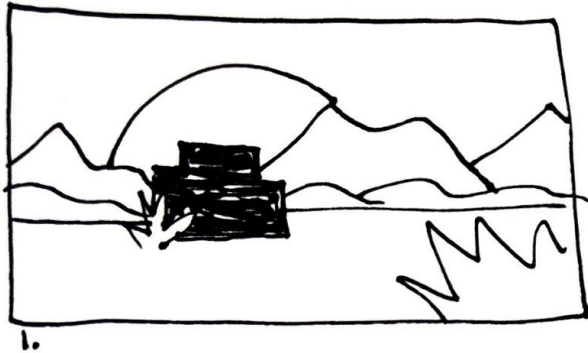
Your artwork should show your understanding of the:

- **Medium**
 - Color within the lines
 - Layers of oil pastel
 - No paper showing
- **Artist Style**
 - What makes your artwork look like O'Keeffe's?
- **Elements of Art**
 - Color: Use 3 Analogous colors in all sections- Sky, Sun, Mountains, Ground
Remember, oil pastel likes layers!
 - Space : You should have a background, midground, and a foreground.
 - Shape: Organic shapes in your background, and Geometric shapes for your structure.
- **Craftsmanship**
 - Your artwork is ready for display; it looks 'finished' and well cared for.
 - Your artwork meets all of the project guidelines.



Create 3 thumbnail sketches that show your layout ideas. You will share these with your group.

Thumbnail sketches are **small**, super **fast** sketches that use **basic shapes** and **lines** to get an idea across visually. Often, you will need to explain your ideas too.



THUMBNAIL SKETCHES

