



OTOMI PATTERN
MEXICAN FOLK ART



Before you begin looking through the slides,
know that we will go over everything during our
virtual time together.

This is just an additional resource to help guide you through the project at your own pace.

Before we discuss Otomi as
an art form, we need to
know it's history.

The Otomi Toltec people are a group of indigenous people

from Mexico. Some historians believe that the Otomi were the first inhabitants of the Valley of Mexico, and the first to discover fire.



You can learn more, here.
<http://otomi.org/about/>





**Otomi
Ceremonial
Center, in
Temoaya
Mexico**

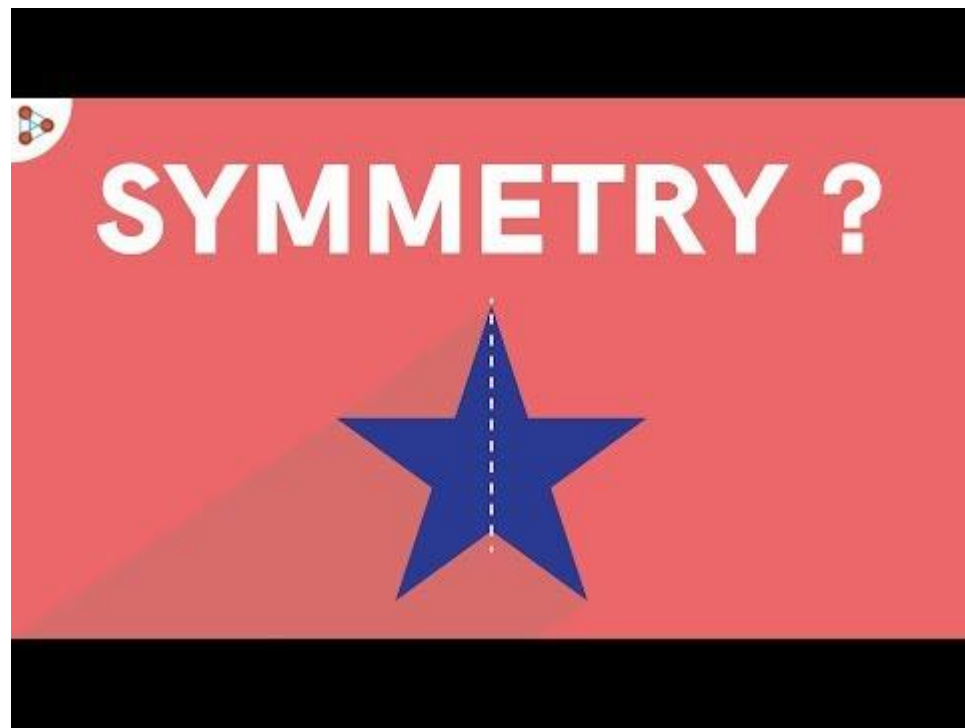


Okay, now that we know a little bit more about the Otomi people, let's look at the famous Otomi Pattern.

OTOMI PATTERNS are: **Symmetrical.**

This means that you could cut it down the center and both sides would be the same.







Otomi patterns contain **flora** and **fauna**.

Flora means plants, like flowers, trees, and leaves.

Fauna means animals, like roosters, armadillo, wild birds, rabbits, horses, and deer.



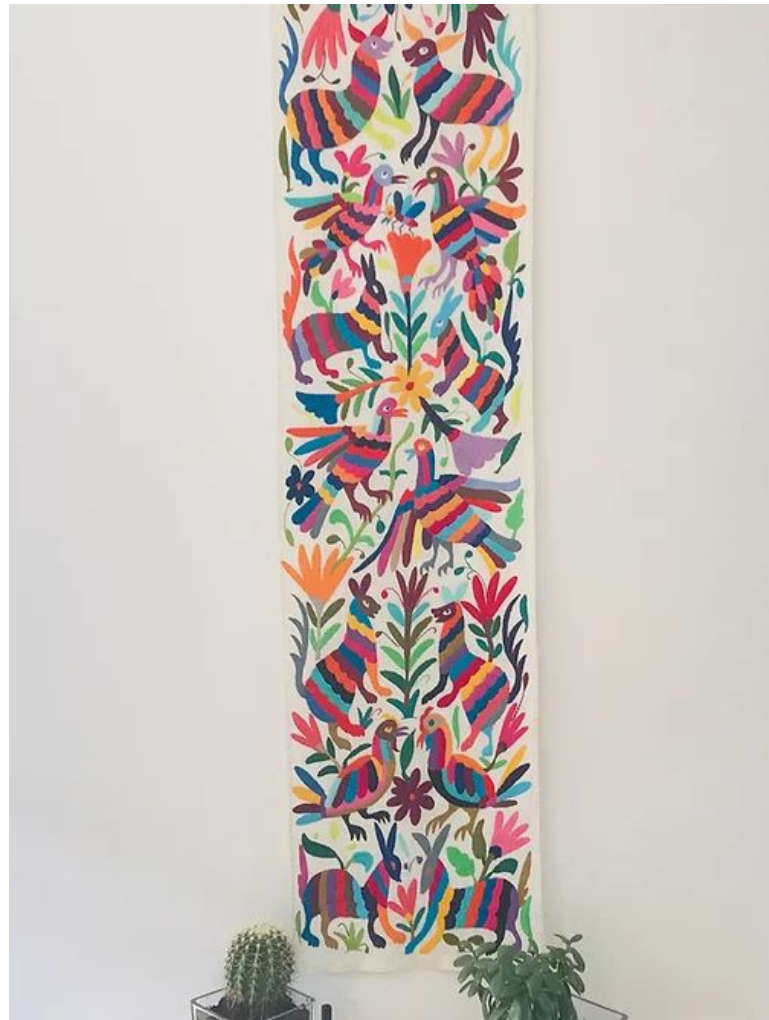
Otomi patterns are traditionally embroidered or painted on Amate bark.

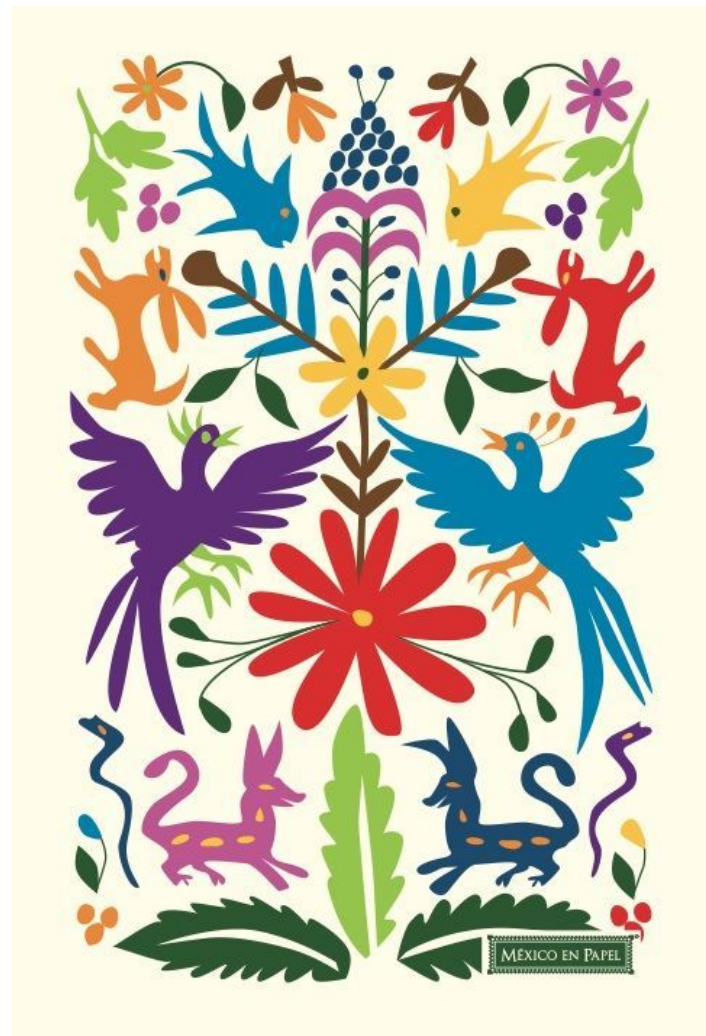


Let's look at some more
examples of Otomi Prints









Here are some close-ups



HOW WOULD YOU DESCRIBE OTOMI PATTERNS?

On a piece of paper, **write** down at least 3 things all the patterns had in common.



Under your list, **answer** the following questions:

- What did you notice about the shapes?
- Describe the colors you saw.
- What did you notice about the background?

HERE IS YOUR PROJECT.

Create a symmetrical design, inspired by the Otomi patterns you've explored.

You will be assessed on your ability to show me your understanding of:

- Symmetrical balance
- Incorporating the Otomi artistic style
(think about the list you just made)
- Craftsmanship - WHAT IS THAT?! Don't worry, we'll talk about it on the next slide.

Craftsmanship

THE TIME, EFFORT AND ATTENTION TO DETAIL ONE PUTS INTO THEIR CRAFT. IN OTHERWORDS, THE OVERALL QUALITY OF THE PIECE.



A GOOD RULE OF THUMB TO LIVE BY, AND CRAFT BY:
BE WHO BOB ROSS WOULD WANT YOU TO BE.

PROJECT STEPS

- Research Otomi patterns
- Sketch a few examples on a scratch piece of paper. Think about what 'flora and fauna' you want to include.
- If you want, you can draw ONE HALF of your design and trace the other half by carbon coping. Directions on next slides.
- Once your design is on your final paper, make sure all marks you want erased are FULLY erased.
- Color it in. Do you want striped or a solid shapes?

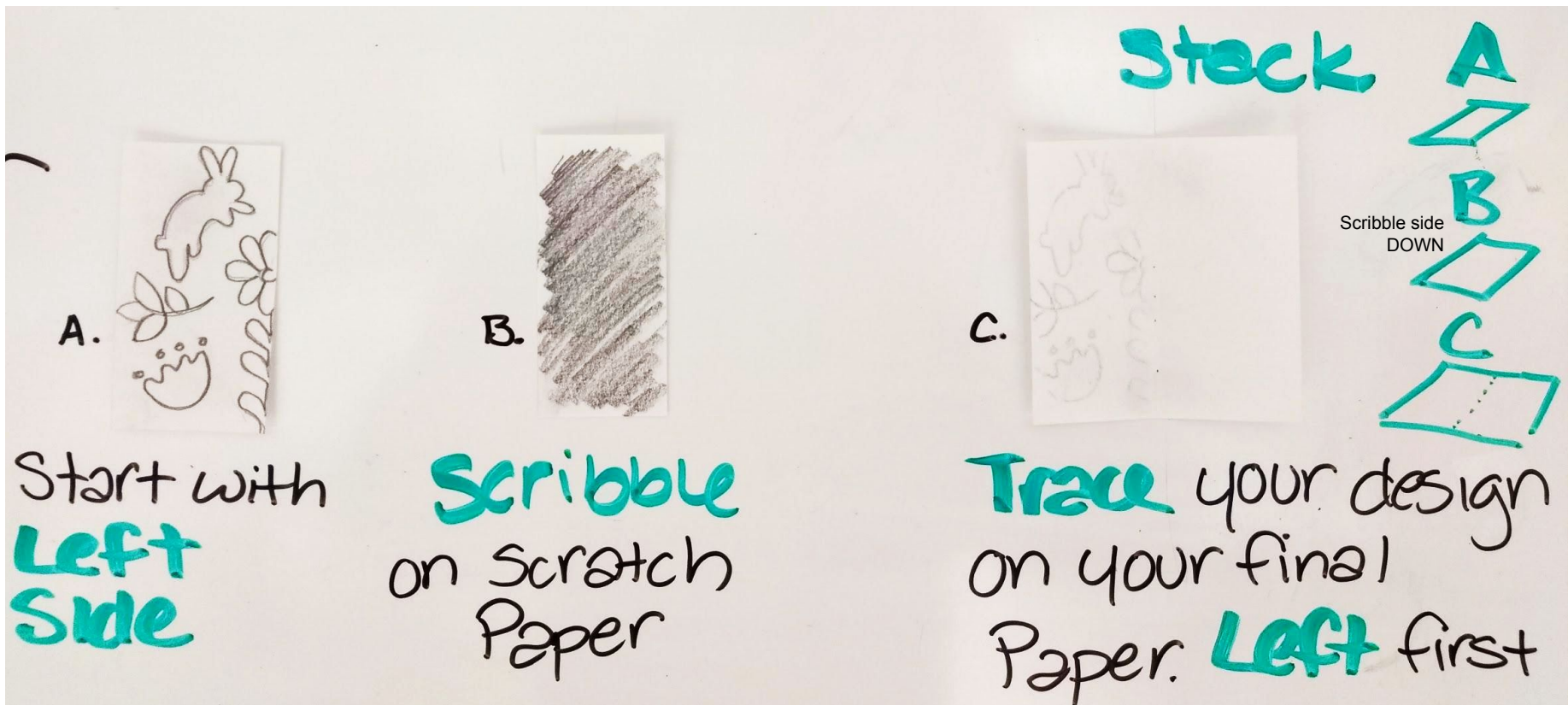


CARBON COPY DIRECTIONS

YOU WILL DRAW ONE
SIDE OF YOUR DESIGN



How to carbon copy

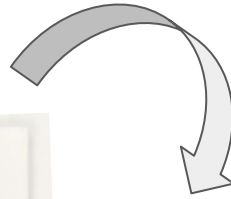


YOU'LL HAVE SOMETHING
LIKE THIS.

IT WILL BE LIGHT, BUT THAT'S
OKAY! YOU CAN MAKE THEM
DARKER IF YOU WANT.



FLIP OVER YOUR PATTERN, AND TRACE THE RIGHT SIDE THE SAME WAY.



Don't forget to place your scribble paper underneath before you trace.
Scribble side down!



Dia de los Muertos

